

**Misure espresse in mm. // All dimensions are in mm.**

04/04/2017

tel. 0363/50827  
0363/998359  
fax. 0363/351215



Taglio (Cut):

**Piega (Crease):** — — — — —

Piega Rovescia:  
(Reverse Crease): \_\_\_\_\_

Perforatore: \_\_\_\_\_  
(Perforating Rule): \_\_\_\_\_

1/2 Taglio (Half-Cut): -----

1/2 Taglio Rovescio:

(Reverse Half-Cut): 

(Particular Cut): \_\_\_\_\_

Area: 57.643,77sq mm

Lengths MTL: 3,01448 m

**Tipo Mat. - Material:**

B/G

Gramm./m<sup>2</sup>

320

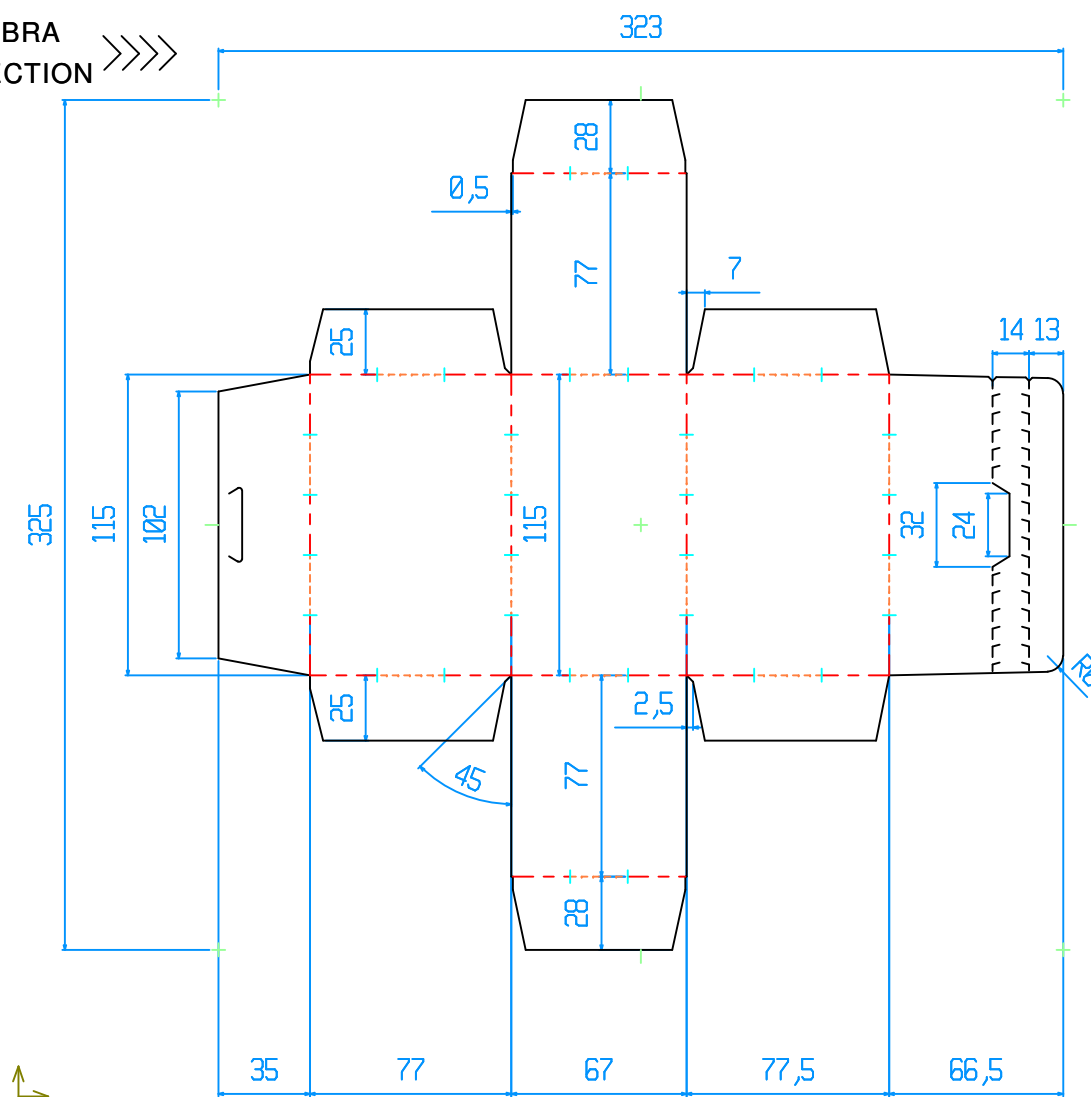
Thickness mm.
---------------

0,45

F.to Cartone - Sheet Size
---------------------------

Approvazione:

Programmatore - Cad Operator LUCA
--------------------------------------



th300h423\_018

***Grafica Romano***

E-mail: [info@fustelle.it](mailto:info@fustelle.it)  
[tecnolasersrl@tin.it](mailto:tecnolasersrl@tin.it)  
 sito Internet: [www.fustelle.it](http://www.fustelle.it)

Numero progetto - Project Nr.  
**BE1387.D**